

Formative Assessment

Schoolnet Assess™

Powerful tools to implement formative assessments, measure progress and propel student performance

Assess, the comprehensive benchmarking and formative assessment solution within Schoolnet's Suite of data-driven education software, provides districts with all of the tools required to implement district-wide assessment programs. Using Assess, districts are able to create, manage and deploy a variety of classroom, school and district-wide assessments. The powerful reporting and analysis capabilities available within the Schoolnet Suite allow teachers, principals and administrators to immediately access student assessment results and make real-time adjustments in instruction, professional development and supplemental services.

Assess provides maximum flexibility for creating and administering assessments at all levels throughout the district. Item, rubric and test content banks may be created at the individual user, school and district level to provide content security. Tests may be administered using off-the-shelf scan forms, plain paper scan forms or online – or any of these options in combination depending on district requirements and infrastructure.

The open and interoperable design of Assess and the Schoolnet Suite facilitates the incorporation of assessment content from a wide range of vendors, with unified reporting and a single interface for assessing student performance and analyzing results.



Key Features and Benefits

Teachers and assessment staff can:

- Deploy district-created and third-party assessment items and tests at the **classroom, school and district level** using permissioned test and item banks
- Efficiently deploy standards-aligned benchmark assessments both online and using plain-paper and off-the-shelf scan forms
- Immediately access a variety of assessment dashboards and reports to inform instructional planning, improve decision making and to identify struggling students for intervention and differentiated instruction
- Analyze assessment results at the subject, standard and item levels, disaggregated by school, teacher, section, and NCLB subgroup
- Centrally manage all aspects of the assessment process including test and item creation, test scheduling, printing, pre-slugging, scanning and assessment data collection progress
- Use standards-based assessment outcomes to search and access instructional materials banks populated with best practices and resources aggregated from across the district
- Engage students and parents with secure online access to the Student Profile containing immediate access to assessment results, student grades, standardized test results and attendance information
- Change assessment item and test content vendors without making large-scale changes in assessment and reporting technology

Technical Specifications

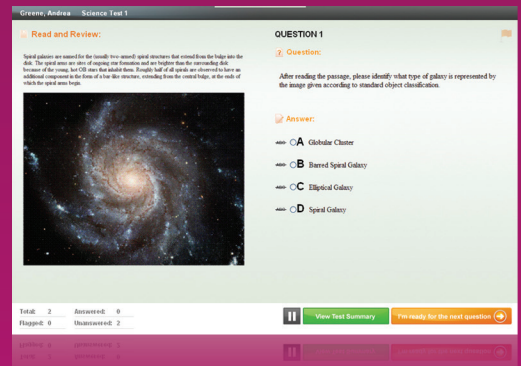
Schoolnet's web-enabled, zero-footprint applications are designed to industry standards:

- Open and interoperable
- Microsoft® .Net Framework
- Microsoft® Internet Explorer 6.0 and higher, Apple Safari 1.3 and higher, or Mozilla Firefox 1.0 and higher
- Microsoft® SQL Server 2005

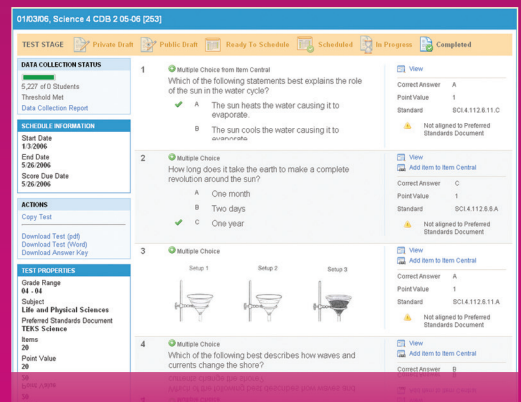
Services

Schoolnet offers:

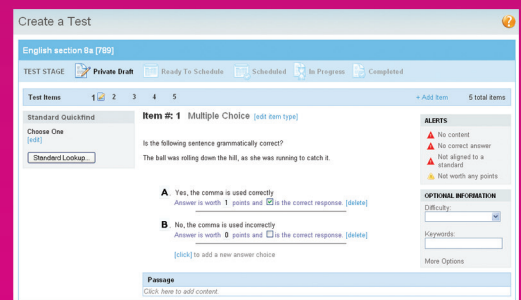
- Comprehensive services– from needs assessment and implementation to training and user workshops – to drive adoption and usage district-wide



The online assessment component of Assess provides a dynamic test-taking platform with the ability to instantly analyze results.



The test management capabilities of Assess provide educators with a single interface for managing an in-depth assessment from beginning to end.



The item and test creation tools in Assess allow users to author their own items, import existing items, build tests and create answer-key only assessments.