



# Response to Intervention

## Schoolnet Respond™

Dynamic tools for educators to help struggling students get back on track toward success

**Respond** is a comprehensive Response to Intervention (RTI) software solution that empowers educators to evaluate the needs of students, identify those who are struggling, and create targeted intervention plans to guide them toward success. Leveraging the wealth of information available in the Schoolnet Instructional Management Suite (IMS), Respond makes it easy for districts to design and implement consistent RTI processes. By centrally organizing all RTI data, Respond automates student screening, streamlines intervention plan creation and progress monitoring, and provides detailed reports and dashboards that gives teams the tools they need to implement successful RTI programs.

When combined with the Schoolnet Suite of data driven software, Respond:

- Leverages a variety of data to identify struggling students before they fall too far behind to catch up
- Eliminates the tedious paper-based RTI process that results in mountains of information stored in a variety of formats and locations
- Centralizes all instructional and behavioral information into a single, online location making it easier for districts to establish and enforce consistent intervention protocols
- Provides intuitive dashboards that help educators and administrators ensure that students are given every opportunity they need to succeed



## Key Benefits for Administrators, Counselors, and Teachers

### Clearly Identify Struggling Students

- Your Challenge:** “Each of our schools is using different rules for identifying students in need of interventions. We need a more consistent method to use our data to identify our struggling students.”
- Our Solution:** Respond streamlines the screening process for students who are falling behind by automatically filtering data based on district-defined criteria including student assessment performance, grades, attendance or disciplinary information. Additionally, Administrators and Counselors can manually enroll students who may have other academic or behavioral challenges, ensuring that no student slips through the cracks.

### Easily Create Intervention Plans

- Your Challenge:** “Clipboards, binders, checklists, phone calls...building and managing an intervention plan is so tedious.”
- Our Solution:** The variety of implementation and tracking tools within Respond are designed to save time and increase efficiency. Build intervention teams, assign intervention strategies and tasks from district resources, and schedule plan reviews in just a few clicks.

### Organize Information into User Dashboards

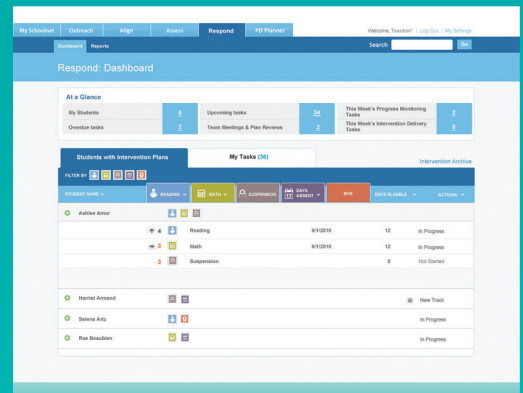
- Your Challenge:** “With so many things to keep track of, I don’t know where to start. How do I see the big picture?”
- Our Solution:** Respond organizes all of your key RTI data into one role-based dashboard. At-a-glance views show which students are eligible for intervention plans as well as quick links to create, view, and modify intervention plans, assigned tasks, and notes.

### Document Progress

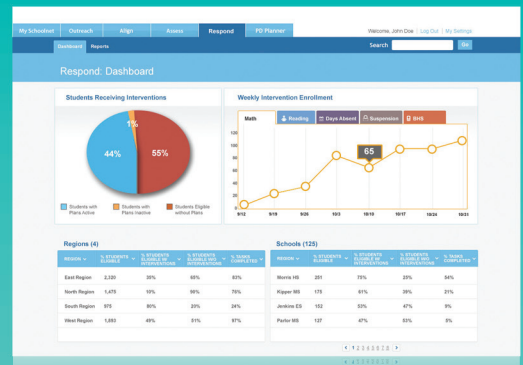
- Your Challenge:** “How do we know that what we are doing is really working?”
- Our Solution:** Respond’s centralized task and progress monitoring tools ensure that all intervention team members are aware of their assigned actions, have tools for logging observations, and can track student progress in real-time. You now have the ability to quickly adjust the plan based on the child’s response at every stage.

### Access Detailed Reports

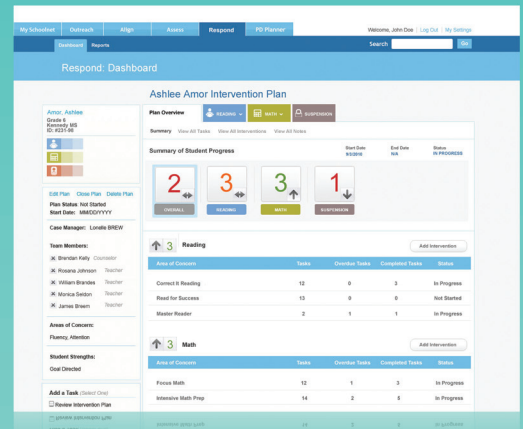
- Your Challenge:** “I have no way to show that interventions are actually being delivered to students who are struggling, let alone give my educators credit for the hard work they’re doing.”
- Our Solution:** Respond helps you meet compliance requirements for intervention plan logging and reporting with aggregated data on student eligibility, plan activation and status, and case management meetings.



Manage RTI caseloads with the Teacher Intervention Dashboard, displaying the status and progress of students currently receiving interventions and detailing their RTI-related tasks.



Districts can evaluate the effectiveness of their various intervention plans and report on key RTI data.



Detailed Student Progress Monitoring Dashboards for each student with an RTI plan provide educators with a real-time view of students' progress toward defined goals.